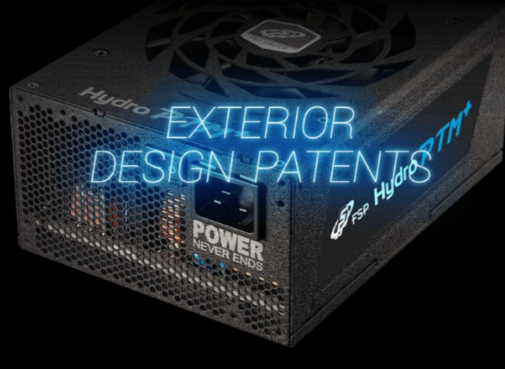


Unique and Rugged ID for Mod

Any serious PC build enthusiast will simply love HYDRO PTM+. Its unique combination of features includes: gorgeous LED RGB lighting, a power rating of 1200W when air cooled, going up to 1400W when liquid cooled, and an 80 PLUS® Platinum certification with 92% efficiency rating.



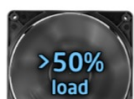
Buy HYDRO PTM+ Limited Edition [Here](#)

Intelligent Fan Speed Control

HYDRO PTM+ 1200W was built to be silent. Fanless mode (0 dBA) is engaged at below 50% of system load for silent operation when water-cooling is installed. Once surpassing the predefined thermal limiter, the 135 mm FDB fan automatically and dynamically starts to spin according to the system load.



PSU ON with LCS
Fan OFF



PSU ON with LCS
Fan ON

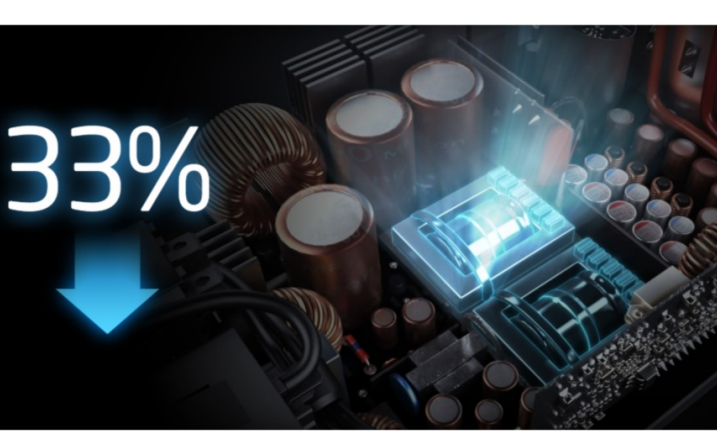


Aura Sync

FSP has teamed up with ASUS to bring Aura Sync RGB lighting technology, enabled through Aura Sync compatible motherboards, providing a nearly endless spectrum of RGB lighting colors and patterns for your system.

Excitement of Power Overclocking

Liquid Cooled Power On! An innovative water-cooling solution, HYDRO PTM+ enables overclocking of the peak output from 1200W up to 1400W when enabled.

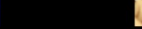


Ultimate Cooling

In the lab test, under 50°C ambient temperature and 100% loading condition, HYDRO PTM+ provides the supreme cooling performance from 100°C to 70.8°C on Transformer when liquid cooled power on.

FSP Co-developed with Bitspower

Bitspower, a renowned creator of PC liquid-cooling solutions and visionary of revolutionary manufacturing, firmly stands behind FSP's team of engineers and product developers.



Supports Latest CPU Systems

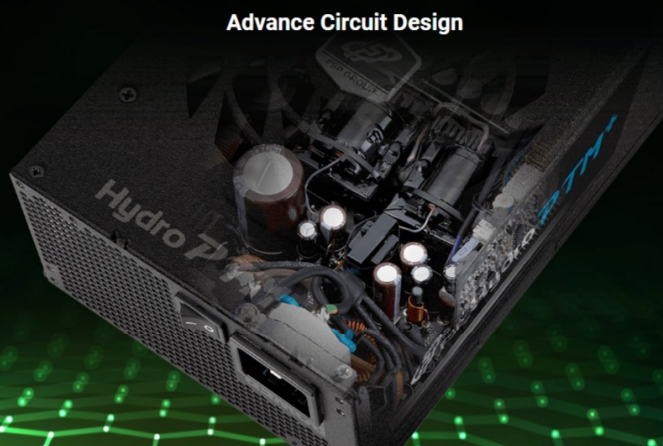
HYDRO PTM+ fully supports high performance systems, complies with the most recent Intel and AMD, ATX12V v2.4 & EPS12V v2.92 specifications.

Full Modular Design with Ribbon Cable

The modular cable design simplifies installation, improves ventilation and gives flexibility and simplicity, allowing you to choose only the necessary cables.

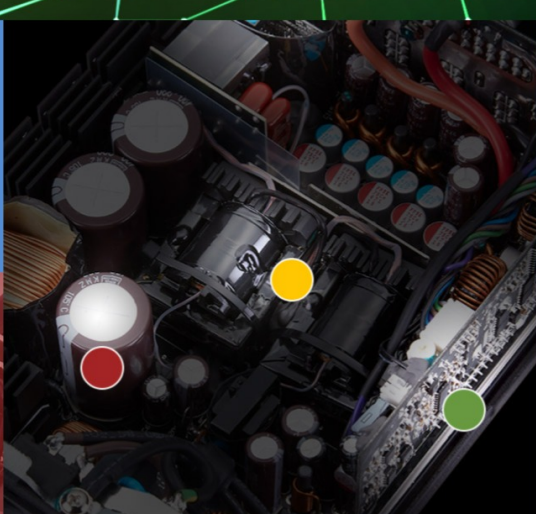


Advance Circuit Design



Server Grade Design

Copper bars joint mainboard and daughter board to boost conversion efficiency.



Dual Transformer Design

The design provides ultimate performance & highest protection for your system!



DC - DC Module Design

Innovative solutions to fit design constraints offer supreme efficiency, voltage stability and high system compatibility.



More Information



Cables



Connectors	1	2	8	12	4	1
ATX 20+4						
4+4 PIN						
PCI-E 6+2						
SATA						
MoIse (PERIPHERAL)						
Floppy						

AC/DC						
AC Input	100-240Vac~ 15-9A 50-60Hz					
DC Output	+3.3V	+5V	+12V	-12V	+5Vsb	
Max Output Current	34A	24A	100A	0.3A	3A	
Max Combined Power	120W		1200W	3.6W	15W	
Total Power	1200W					

SPECIFICATIONS

Model	HPT1200M
Rated Output Power	1200W
Max. Output Power	1400W
Form Factor	ATX
80 PLUS Certification	Platinum
Input Voltage	100-240V
Input Current	15-9A
Input Frequency	60/50Hz
Efficiency	> 92%
Fan Type	FDB Fan, 135mm
Dimensions(L x W x H)	150 x 220 x 86mm
Weight	3.22kg
Protection	OCP, OVP, SCP, OPP, OTP